

FRESNEL SPOTS

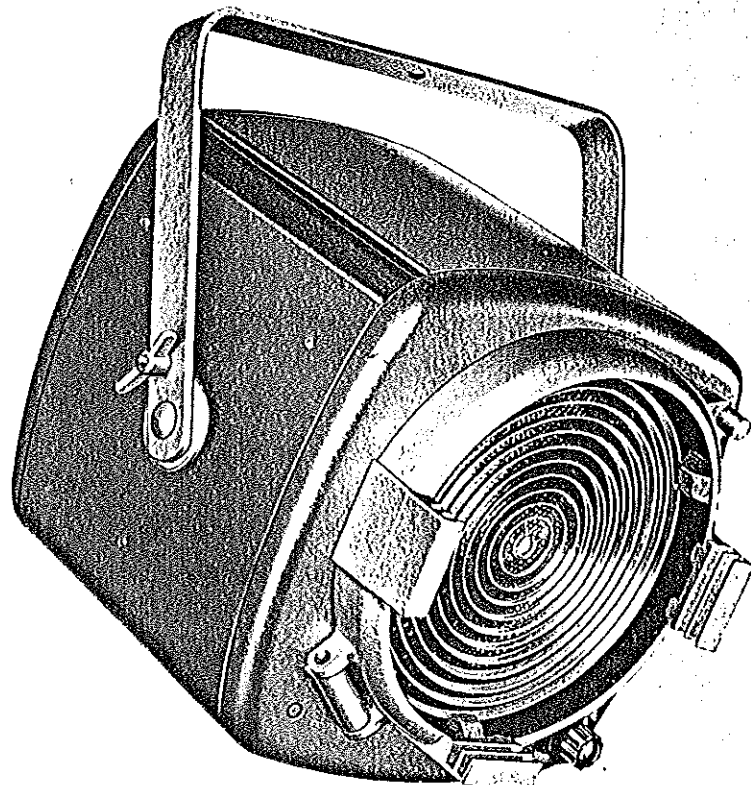


Patt 223, Patt 223/C, 750/1000 Watt

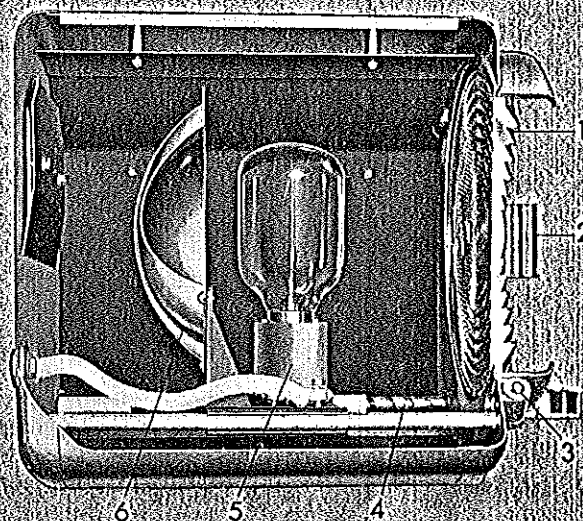
This spotlight provides great flexibility as the circular soft-edged beam can be varied from an intense near-parallel beam of $7\frac{1}{2}^\circ$ to a high efficiency 70° medium angle flood by adjustment of the lead-screw focussing.

The light is collected by an 8-in. diameter short focus Fresnel lens supplemented by a spherical reflector. The beam spread can be contained by a four-door rotatable barndoor attachment which can be added to the front runners.

This spotlight is recommended for high-lighting in stage, television, and display work. For open stage applications coloured lenses are available to reduce the low intensity light outside the field angle.



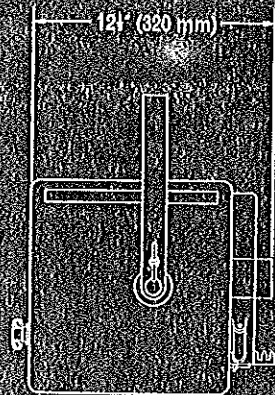
1. 8-in. diameter short focus Fresnel lens - coloured on Patt 223/C
2. Double runners for colour frame and/or barndoor attachment
3. Diagonally hinged lens front for interior access
4. Lead-screw drive of lampholder and reflector tray with front focussing knob
5. Medium prefocus lampholder
6. 6-in. diameter spherical reflector



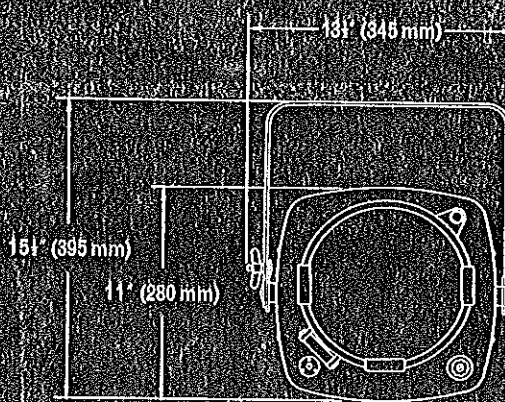
STRAND FRESNEL SPOTS K.A.I.C. - A.I.A. No. 31 - 4-25

MALLABAR LTD.

375 HARGRAVE ST., WINNIPEG 2, MAN.



SCALE 1:10



WEIGHT
 Patt 223 16 lb (6.8 kilos)

LAMPS & PERFORMANCE DATA

	THROW DISTANCE		BEAM SPREAD		ILLUMINATION					
	feet	metres	feet	metres	1000W 120V 1M/T20P/SP		1000W 240V - Class T/5 or Philips 7041C		750W 120V 750T20P/SP	
					f.c.	lux	f.c.	lux	f.c.	lux
Pattern 223 SPOT FOCUS	25	9	3	1.2	165	1275	140	1080	99	765
BEAM ANGLE 7½° In which Intensity varies 2:1	30		4		115		97		69	
FIELD ANGLE 15° In which Intensity varies 10:1	35	11	5	1.5	84	850	71	725	51	510
Pattern 223 FLOOD FOCUS	15	5	21	7	36	325	31	275	22	200
BEAM ANGLE 70° In which Intensity varies 2:1	20		28		20		17		13	
FIELD ANGLE 82° In which Intensity varies 10:1	25		35		10		165		140	

SPECIFICATION

The spotlight shall be constructed of zinc coated steel pressings, with baffled ventilation slots, and aluminium alloy diecastings and shall contain a prefocus lampholder and a spherical reflector both adjustable relative to a Fresnel lens. The medium prefocus (P.28) porcelain lampholder for a 750 or 1000-watt projection lamp shall be mounted on a diecast tray together with a 6-in. (150mm) diameter spherical reflector of polished anodised aluminium. This tray shall be adjustable through 4½-in. (110mm) by means of a lead-screw provided with a heat resisting knob at the front. A removable spring clip shall be provided to restrict the tray movement so that spherical bulb lamps can be used.

The 8-in. (200mm) diameter short focus Fresnel lens (coloured on Patt 223/C) shall be recessed within its diecast mount which shall hinge diagonally downwards to provide interior access but which is normally secured by a captive thumb screw. Double diecast colour frame runners shall be provided and one 8½ x 8½-in. (215 x 215mm) metal colour frame supplied.

An external length of 30-in. (0.75m) heat resisting 3-core flexible cable shall be provided and fitted with a strain relief gland.

The exterior shall be smooth finished with epoxy resin hard hammer grey and the interior, including lens recess, flat black.

The spotlight shall be mounted in a reversible cadmium plated mild steel fork with friction disc tilt clamp and ½-in. bolt and wing nut for suspension.

VARIATIONS Available at time of manufacture

6ft (1.8m) heat-resisting flexible cable.

Tilt and swivel scale indication.

'Polestar' model for pole operation of pan, tilt and focus.

ACCESSORIES

Ref. 633. Four-door rotatable barndoor attachment.

Ref. 502. 1½-in. diameter hollow TV spigot.